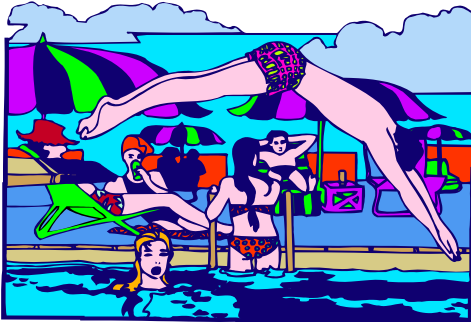


Rental Information



District Aquatic Manager
Voicemail: (651) 213-2604
Fax: (651) 213-2550
Email: eheath@isd2144.org

effective January, 2021

RENTAL RATES

Basic rental rates

district rates

<i># of guests</i>	<i>rental rates swim pool</i>
1-25	\$95 for the first hour time, \$75 for each additional hour
26-50	\$140 for the first hour \$125 for each additional hour
51-100	\$175 for the first hour \$125 for each additional hour

add \$25 per hour after 9 p.m. or before 7 a.m.

additional facility rates:

Lobby use, changing time, etc. \$20 per 1/2 hr.
 Table & chairs (group < 25 only) \$20

Out of district rates

<i># of guests</i>	<i>rental rates swim pool</i>
1-25	\$125 per hour
26-50	\$170 per hour
51-100	\$200 per hour

add \$35 per hour after 9 p.m. or before 7 a.m.

additional facility rates:

Lobby use, changing time, etc. \$25 per 1/2 hr.
 Table & chairs (group < 50 only) \$25

Basic Party Package (district residents only)



- two hours total of facility time
- cake (includes plates, napkins, forks)

1-25 people \$225



ala carte items

- age appropriate water games - 1-25 \$50

- pizza- 1-25 \$90



- juice - 1-25 \$45



- baked goods - 1-25 \$50



- additional pool time - \$65/hour

- additional pool lobby time \$15 /1/2 hr.
(to setup, decorate, eat cake, open presents)

